

Used with  
Swiftcore Couplers



# THE LOYAL REBATE FORMER

Setting up reinforcing joints every jump impacts construction time. The Swiftcore Joint Former System is reusable for every jump, with an easy coupler connection so you can keep ahead of programme.



## RELIABLE

Traditional systems are prone to movement during the concrete pour and can leave an unsatisfactory finish once the formwork has been removed. The engineered Joint Former System eliminates this issue.



## CONTINUOUS BUILD

Install once and keep moving for typical floors. There is no need to spend time installing pull out boxes every jump, instead your team are ready to fix at every level ahead of time.



## SAFER

The system has been designed for safety and efficiency using a simple plugin anchor and connecting starter bar. This reduces the need for steel fixers to tie in congested spaces, working at heights and following unpredictable practices.

# PERFORMANCE COMPARISON

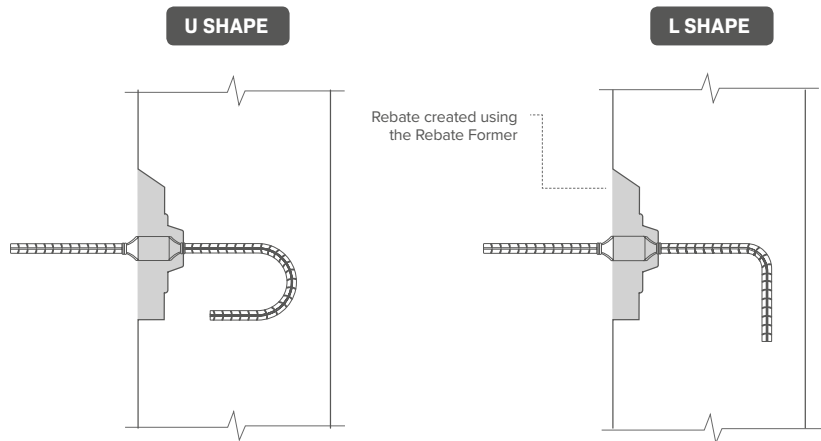
The Joint Former System has a range of benefits to support both the builder and the steel fixer for streamlined construction. Improve speed, safety and quality on your project at cost-competitive prices.

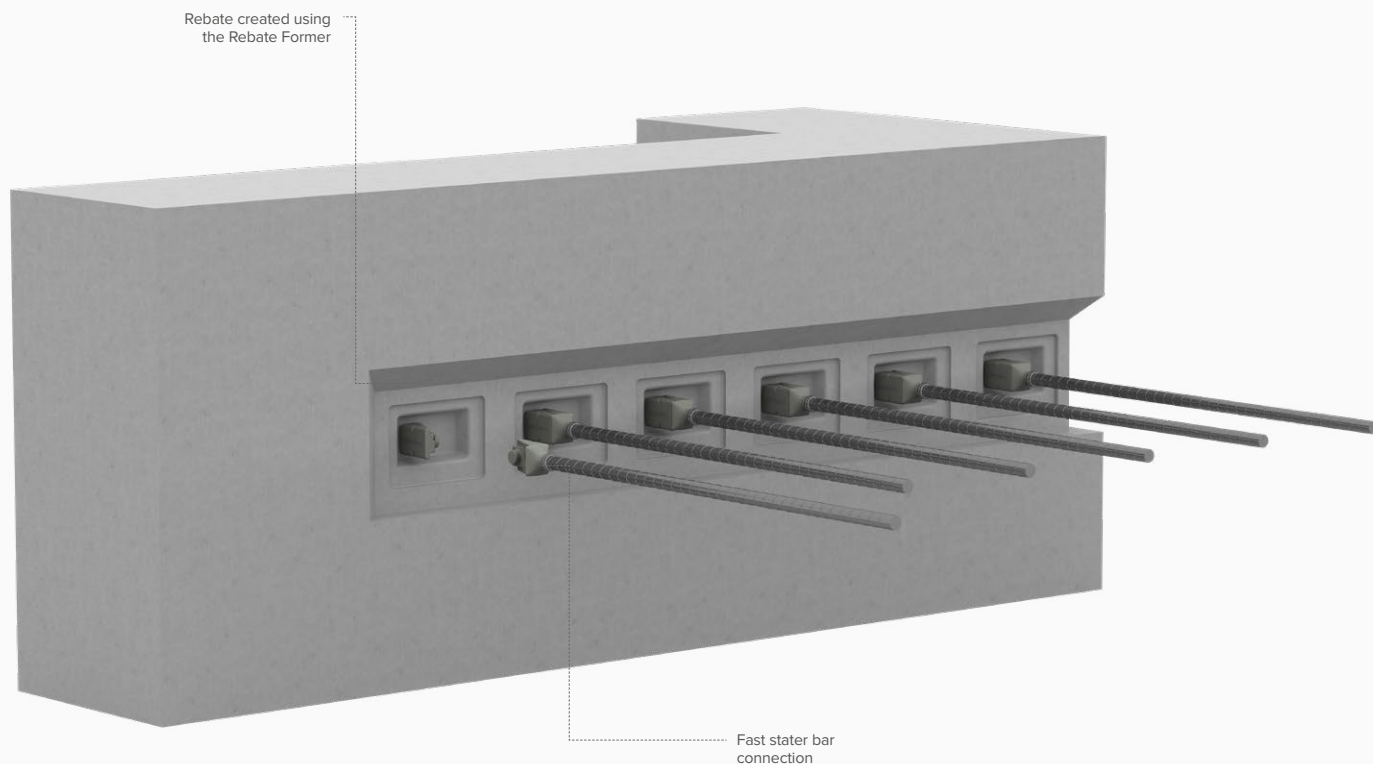
BENEFITS COMPARISON	Swiftcore Former System	Pull Out Bar System
Reusable rebate former	Yes	No
Setup requirement for each floor	Plug in anchors at every level	Install new boxes at every level
Sealed to prevent concrete leak to the rebate face	Yes	No
Steel fixing required	No	Yes
Connecting Slab Preparation Process	3 steps	5 steps
Removal of concrete covering rebate faces	No	Yes
Removal of components to expose the rebate	No	Yes
Waste	Plastic Sleeve	Steel covers & dried concrete
Connecting bars (Core to slab)	Starter bars fitted with Swiftcore Coupler	Pull-out bars

## ANCHORS

The anchors are available in a range of sizes which consist of a (Patent Pending) forged metal coupler which is friction welded to 500N ACRS certified rebar.

The couplers have been tested by a NATA certified laboratory and deemed compliant with the mechanical property's as required by AS/NS 4671:2001. This same process applies to all starter bars.





## SYSTEM COMPARISON

Swiftcore Joint Former System (Single Row)				Pull Out Bar System (Top & Bottom Row)				Anchor System (Single rRw)			
Spacing	Bars	Bar Diameter	Area	Spacing	Bars	Bar Diameter	Area	Spacing	Bars	Bar Diameter	Area
200	6	N16	1206	120	10	N12	1130	200	6	N16	1206
250	5	N16	1005	150	8	N12	904	250	5	N16	1005
200	6	N20	1884	70	16	N12	1808	200	6	N20	1884
250	6	N20	1570	80	14	N12	1582	250	6	N20	1570
200	5	N24	2712	70	16	N12	1808	200	5	N24	2712
250	6	N24	2260	60	20	N12	2260	250	6	N24	2260

Data calculated over a length of 1200mm.  
 The close proximity of the pullout bars to each other means they will not act independently to resist tensile forces.

# QUALITY ASSURANCE

## QUALITY ASSURANCE

Swiftcore Couplers manufacturing process complies to the IATF 16949:2016 International Standard for Automotive Quality Management System. This is applicable to – the manufacture of metal precision forged parts and machined parts.

Agency	Standard	Certificate
--------	----------	-------------



IATF 16949: 2016

NQA # T 12507  
IATF# 0323539

## STANDARDS

Swiftcore Coupler bar assemblies have been tested by a NATA accredited laboratory and deemed compliant with the mechanical property's as required by AS/NZS 4671: 2001. Other applicable standards that passed slip option 2 and tensile testing requirements ISO 15835-1: 2018, ISO 15835-2: 2018, ISO 15835-3: 2018.

Agency	Standard	Certificate
--------	----------	-------------



AS/NZS 4671 : 2001

T 12507

## Disclaimer

The information and details provided on this document and any information linked to this document are for guidance purposes only. Swiftcore reserves the right to amend or modify any information contained herein at any time and without notice. Any subsequent sale will be based on our terms and conditions. Prospective purchasers should make and rely on their inquiries, and a qualified professional should always be consulted before using the products. Swiftcore products should be installed and used only as indicated in Swiftcore documentation and training materials. Documents are available from your Swiftcore sales representative or Online at [www.swiftcore.com.au](http://www.swiftcore.com.au). Swiftcore does not accept any responsibility or liability for any direct, indirect, consequential or other loss or damage suffered by any person arising out of or in connection with any reliance on the enclosed information.



## SCOTT RICE

National Business  
Development Manager

✉ [scottr@bestbar.com.au](mailto:scottr@bestbar.com.au)

☎ 0403 183 448

**Contact  
me for more  
information  
& pricing**